

Figure 2, Source Data 1

Figure 2A

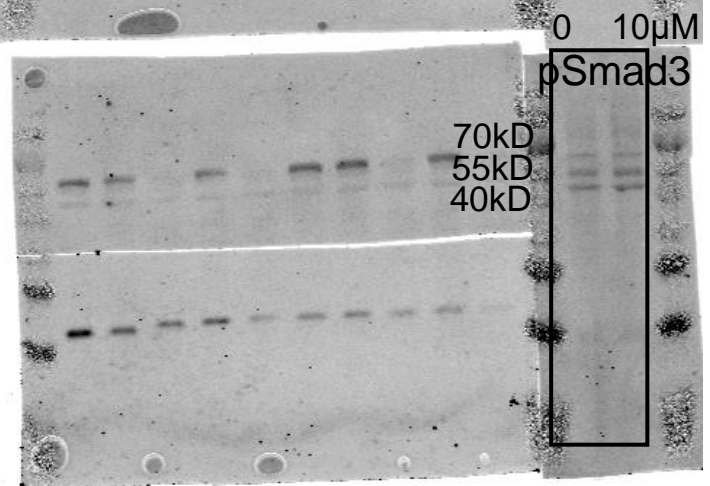
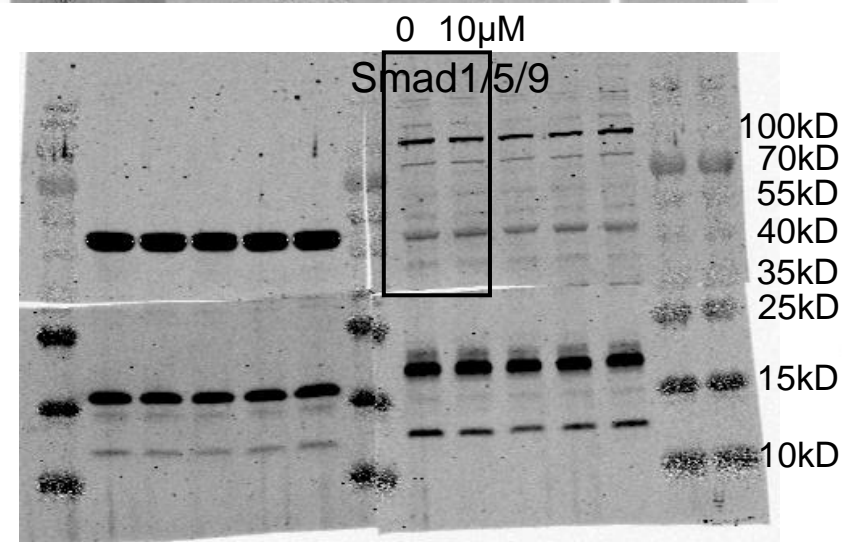
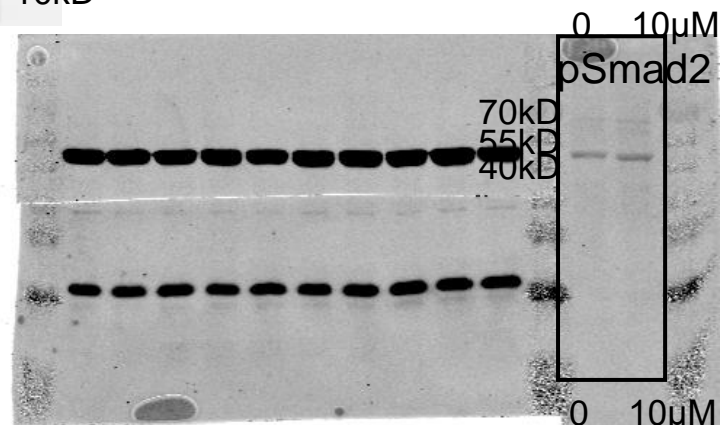
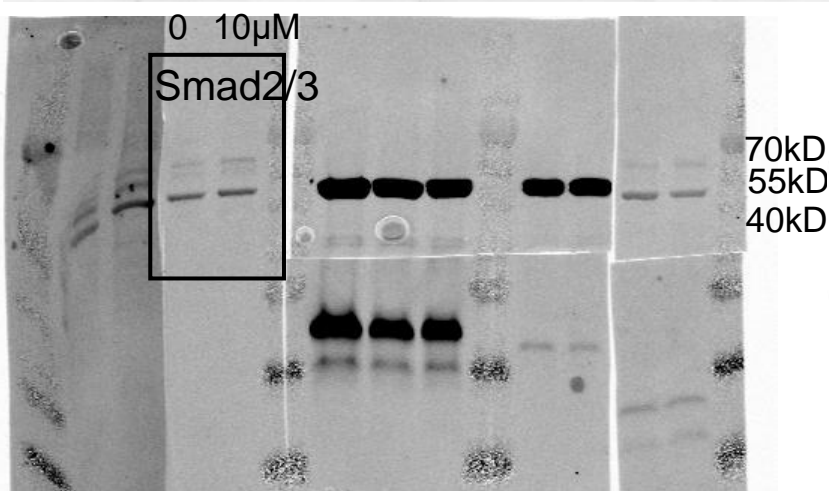
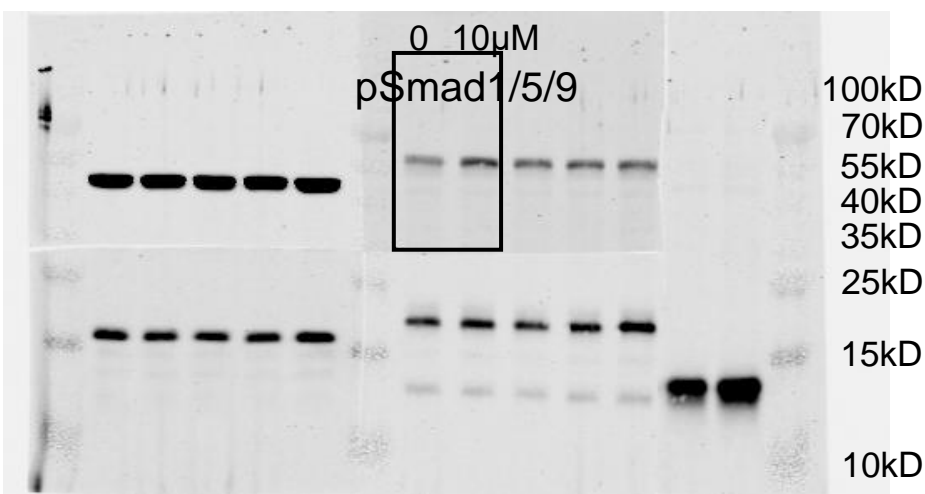
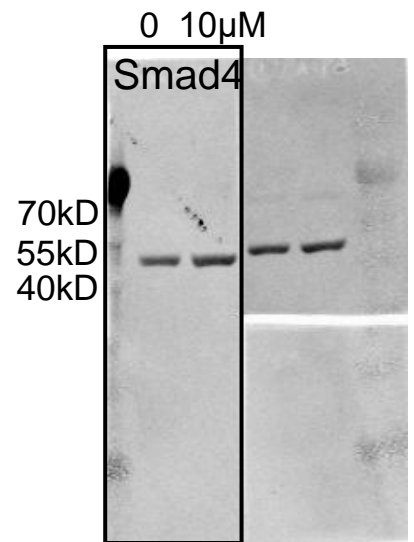
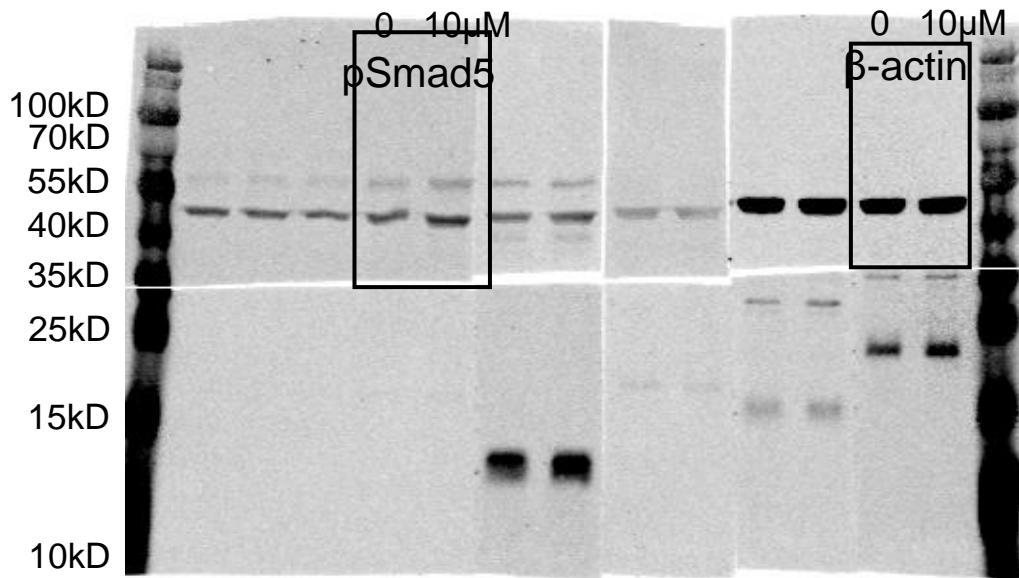


Figure 2, Source Data 1

Figure 2E

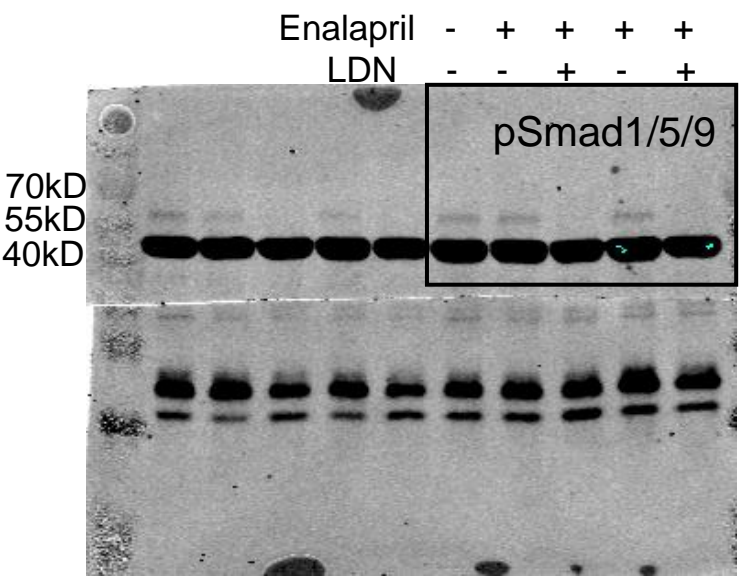
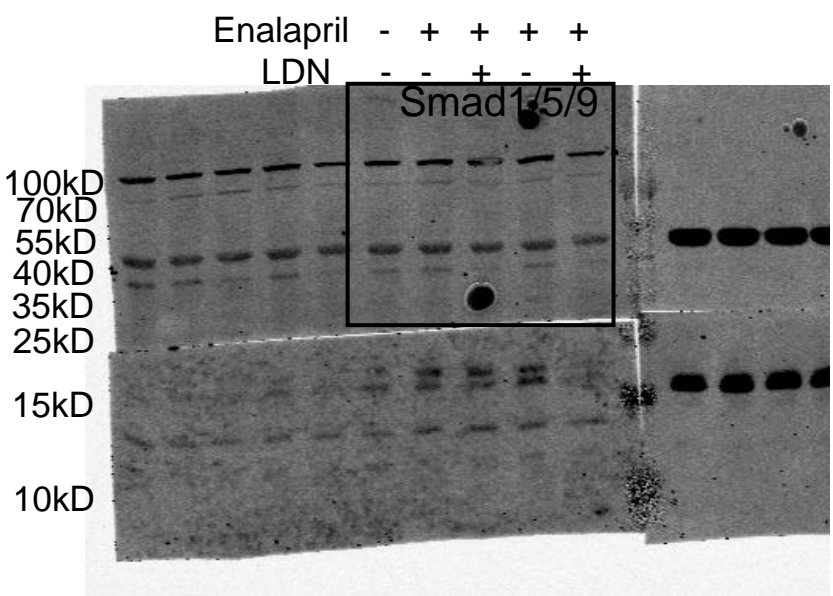
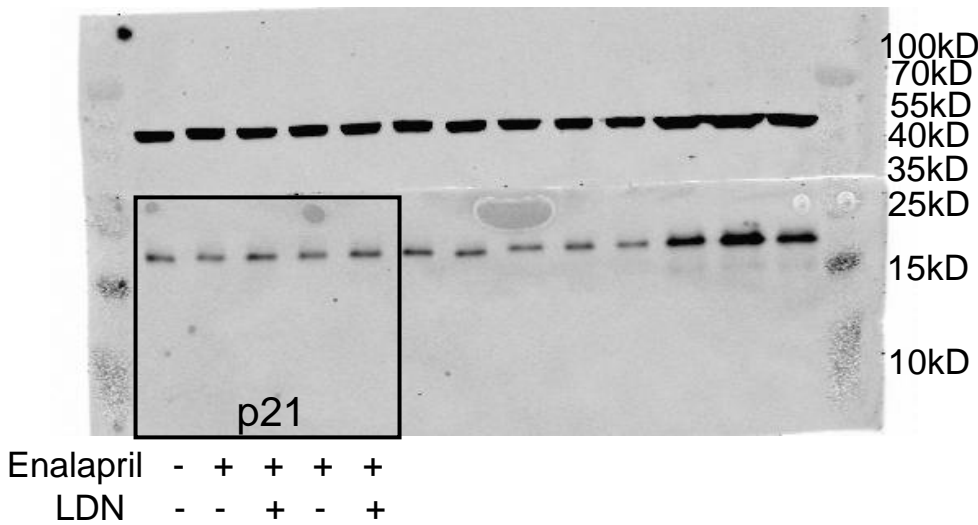
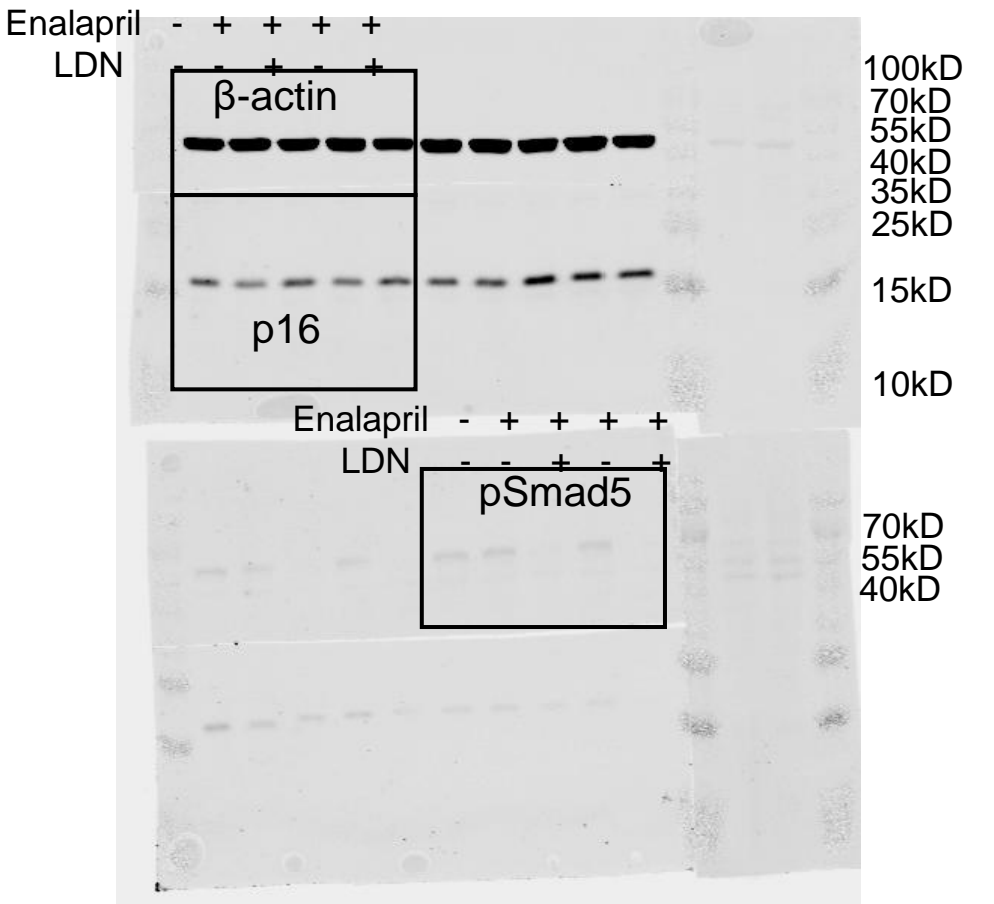


Figure 2, Source Data 1. Original membranes corresponding to Figure 2A, E. Lanes of Figure 2E from left to right correspond to IMR90 cells treated with enalapril at 0 and 10 μ M, respectively. Lanes of Figure 2E from left to right correspond to IMR90 cells treated with combinations of enalapril, a BMP receptor inhibitor (LDN193189, LDN), and BMP4.